



CORRECTION

Open Access



Correction to: Assessing the impacts of cell wall composition on the optimum stage for “Uradome” in moso bamboo

Yuka Furusawa^{1,2*} and Tatsuya Ashitani^{1,3}

Correction to: *J Wood Sci* (2021) 67:38

<https://doi.org/10.1186/s10086-021-01971-x>

After online publication of the article [1], an error was found in Fig. 3. The change does not affect the conclusions of the article in any way. The corrected Fig. 3 is given in this erratum:

The original article can be found online at <https://doi.org/10.1186/s10086-021-01971-x>.

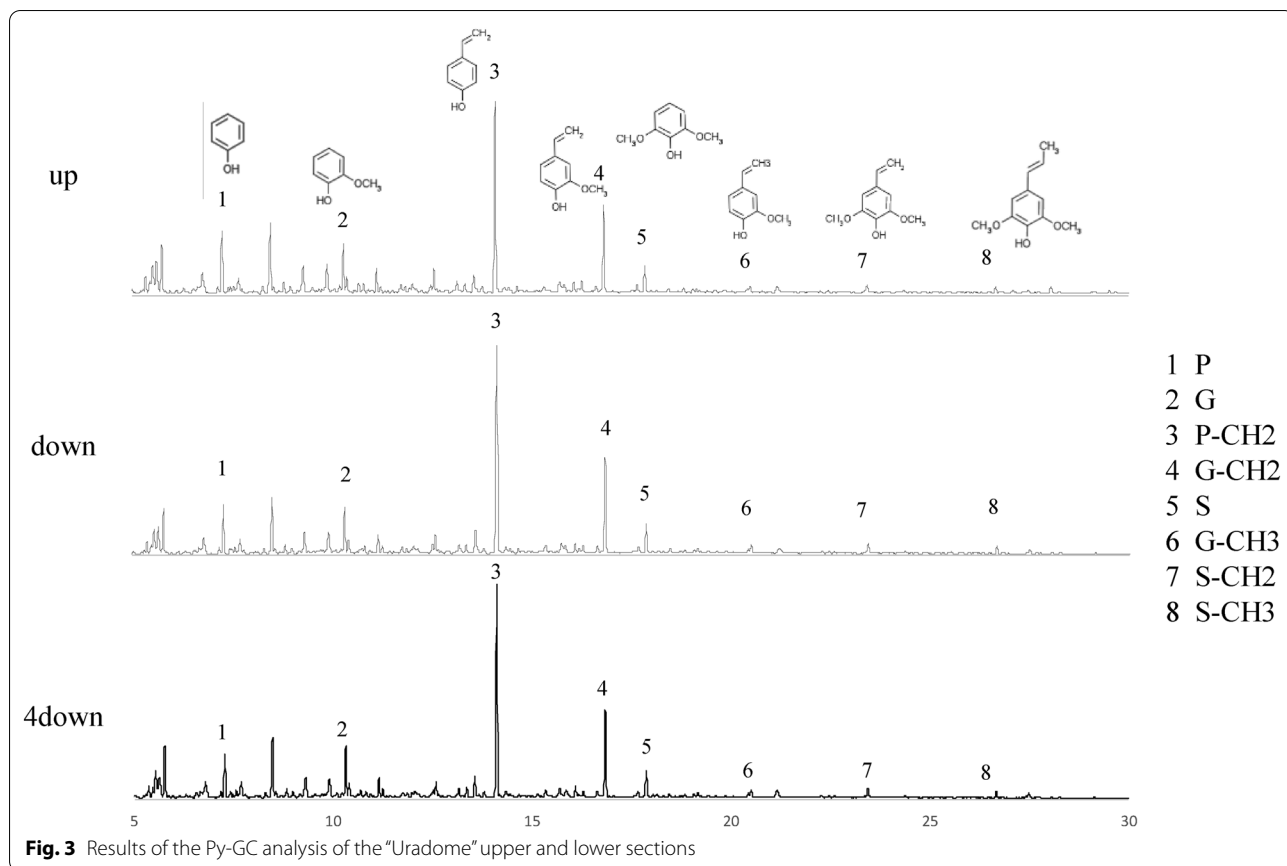
*Correspondence: furusaway@pref.yamagata.jp

¹The United Graduate School of Agricultural Sciences, Iwate University, 3-18 Ueda, Morioka, Iwate 020-0066, Japan

Full list of author information is available at the end of the article



© The Author(s) 2021. **Open Access** This article is licensed under a Creative Commons Attribution 4.0 International License, which permits use, sharing, adaptation, distribution and reproduction in any medium or format, as long as you give appropriate credit to the original author(s) and the source, provide a link to the Creative Commons licence, and indicate if changes were made. The images or other third party material in this article are included in the article's Creative Commons licence, unless indicated otherwise in a credit line to the material. If material is not included in the article's Creative Commons licence and your intended use is not permitted by statutory regulation or exceeds the permitted use, you will need to obtain permission directly from the copyright holder. To view a copy of this licence, visit <http://creativecommons.org/licenses/by/4.0/>.



Author details

¹The United Graduate School of Agricultural Sciences, Iwate University, 3-18 Ueda, Morioka, Iwate 020-0066, Japan. ²Yamagata Prefectural Forest Research and Instruction Center, 2707 Hei Sagae, Sagae, Yamagata 991-0041, Japan. ³Faculty of Agriculture, Yamagata University, 1-23 Wakabamachi, Tsuruoka, Yamagata 997-0037, Japan.

Reference

1. Furusawa Y, Ashitani T (2021) Assessing the impacts of cell wall composition on the optimum stage for "Uradome" in moso bamboo. *J Wood Sci* 67:38. <https://doi.org/10.1186/s10086-021-01971-x>

Publisher's Note

Springer Nature remains neutral with regard to jurisdictional claims in published maps and institutional affiliations.

Published online: 02 August 2021

Submit your manuscript to a SpringerOpen[®] journal and benefit from:

- ▶ Convenient online submission
- ▶ Rigorous peer review
- ▶ Open access: articles freely available online
- ▶ High visibility within the field
- ▶ Retaining the copyright to your article

Submit your next manuscript at ▶ [springeropen.com](https://www.springeropen.com)